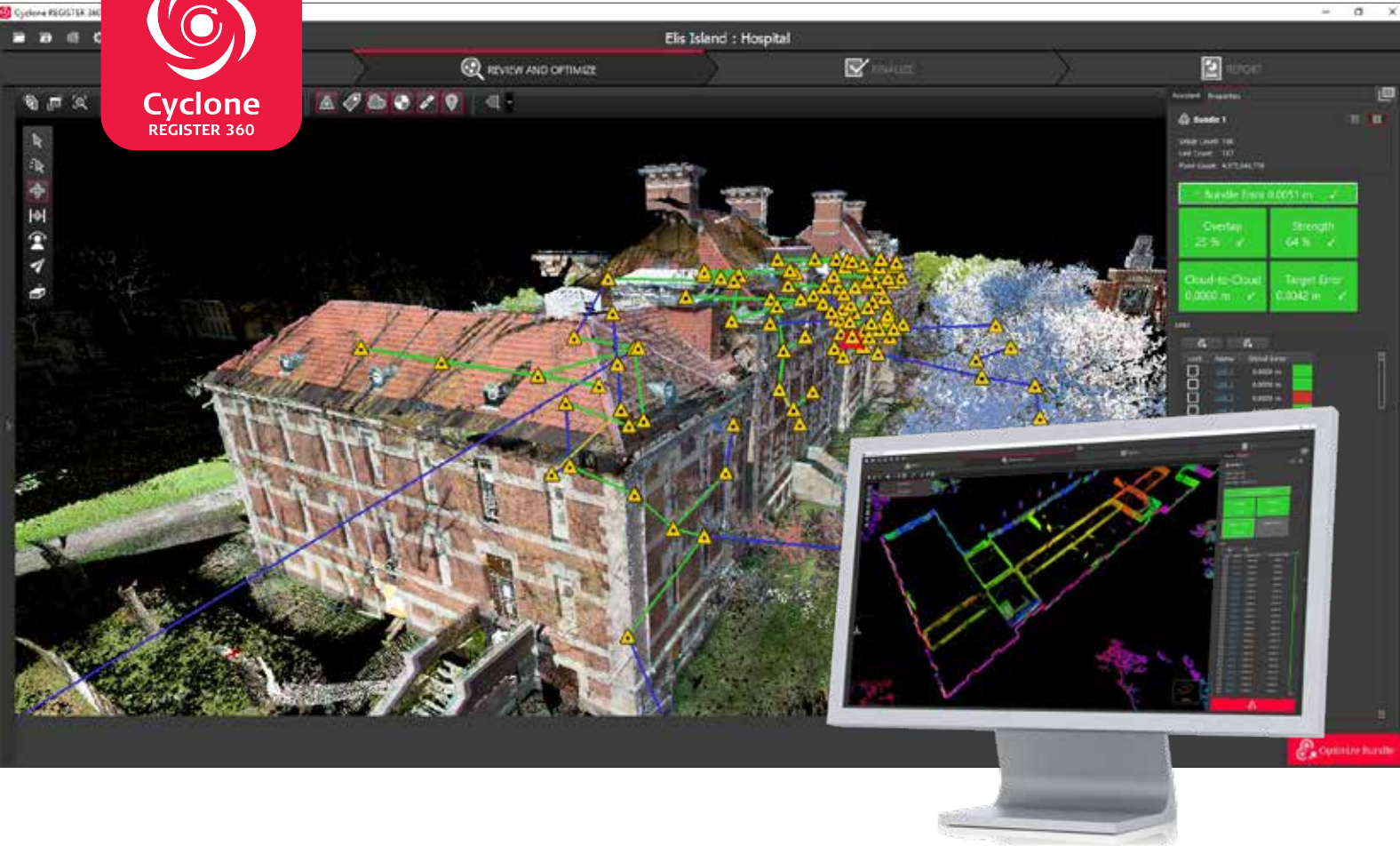


# Leica Cyclone REGISTER 360

## The power of Cyclone, simplified



### Speed

Drag, Drop, Done. From project creation to final reporting, project completion is significantly faster thanks to multi-threaded batch routines, one-step import and processing, guided workflows, built-in QA/QC tools and automated reporting. Cyclone REGISTER 360 saves significant time and guess work while delivering higher productivity.



### Scale

Cyclone REGISTER 360 handles even the most challenging of projects with ease and takes the headache out of complex workflows. New users can execute large projects, scaling to your needs, thanks to the simple-yet-powerful interface. Customise settings to suit your working style and speed projects to conclusion.



### Simplicity

Deliver professional-level project deliverables with ease. Cyclone REGISTER 360 provides guided registration workflows to assist new users and speed the process for experienced users. Intuitive QA tools and reporting take the guesswork out of your registration quality and put all the information you need at your fingertips. Batch export your final products to a range of formats and programs, including the universal LGS digital reality file\*, and even push live data to the cloud for global collaboration with the click of a button.

leica-geosystems.com



- when it has to be **right**

**Leica**  
Geosystems



# Leica Cyclone REGISTER 360

## Feature highlights

### IMPORT

Simplified import	In one simple process, scans are imported, targets are harvested, noise is filtered, thumbnails of scans and targets are created, a fully indexed database is created and registration is optimised via cloud feature mapping.
Improved import speed	Up to 20 x speed improvement of processing and import of scan and image data.
Drag and Drop	Scan and image data can be dragged and dropped into the program. No confusing import settings.

### STANDARD SUPPORTED FILE FORMATS

Import project data collected by Leica Geosystems sensors	Full support of projects from ScanStation C and P-Series, BLK360 via WiFi import, BLK360 Data Manager, RTC360 reality capture solution and Leica Cyclone FIELD 360. Native image formats supported include HDR, LDR and IR when captured by scanner.
Data import	e57, fls, frp, fws, ptg, ptx, zfc, zfprij, zfs.
Batch import and auto-align images	iSTAR, Nodal Ninja, Spheron.
Built-in SiteMap feature	Simply enter an address to quickly grab a site map to overlay your data on for use with SmartAlign and/or in the final registration report.

### REGISTRATION AND VISUALISATION

Auto-Alignment	Auto-Alignment of scans for target and targetless workflows. Cyclone REGISTER 360 leverages the RTC360 VIS technology to automatically align scans pre-import.
Visual Alignment	Quickly visually align scan set ups for cloud-to-cloud registration.
Auto bundle generation	Upon import, bundles will be formed automatically. Clouds can be coloured per-bundle for easy differentiation.
Auto extraction and pattern matching of black & white targets	Upon import, black & white target vertices are extracted and used for bundle formation.
Target Registration	Fully supports target registration (black & white and sphere) with options to prioritise targets over Cloud-to-Cloud registration.
SiteMap	Sitemap object for placing scan positions on real world images or user imported images. RTC360 users can use the device's GPS to automatically place bundles onto a satellite or street map image.
SmartAlign	Helps improve speed and accuracy of the auto-alignment process by allowing the user to visually identify links between setups pre-import.
Smart Error Matrix	Intuitive, visual error matrix auto populates depending on your link or bundle selection. Acceptable error limits can be set by user.
Measurement and Asset creation	Take measurements within the point cloud. Save assets to be included within your final registration report.
Error Panel	Simple aggregation of error reporting in one location to easily QC your registration. Error allowances can be set by the user per project specs.
Registration Version Manager	Version Manager allows you to easily save states of registration, track changes and review history.
World map for SiteMap creation	World map available for use inside the software for Sitemap creation. Satellite and street map views available.
Guided workflow	Guided workflows for all users levels with a user-friendly interface.
Localised	Localised in French, German, Italian, Spanish, Simplified Chinese, Japanese, Korean and Russian.
Link object	Link object provides colour coded view of the quality of your registration network.
Assistant panel	Quickly find help for the most common workflows.
TruSlicer	Quickly slice the cloud in the X, Y and Z directions to QA your alignment on-the-fly.
GeoTags	Create, Edit and publish GeoTags for use downstream in TruView, JetStream and CloudWorx.

### PUBLISHING & PROFESSIONAL REPORTING

Visual Registration Report	Auto-generate a professional registration report as a deliverable pdf once registration is QC'ed. Optimised with corresponding symbols for colour-blind users.
Quality Matrix	Show registration quality in a new visual way to convey accuracy.
Intuitive error reporting	Colour-coded links and overall mean error (optimised with corresponding symbols for colour-blind users) based on user-designated thresholds per project needs.
Batch publish with a few clicks	Push data directly to the cloud (TruView Cloud).** Model-compatible LGS (Leica Geosystems' universal digital reality file)* TruView Enterprise*, TruView Cloud**, JetStream Enterprise*, E57, PTX, PTG, PTS, Professional registration report.
User-selected report graphics	Easily generate important image assets and publish them within your auto generated report.
Interoperability	Move your active registration between all Cyclone modules to take advantage of the speed and simplicity of Cyclone REGISTER 360 or advanced, industry-leading capabilities of Cyclone REGISTER. Cyclone REGISTER 360 takes advantage of pre-alignments completed in Cyclone FIELD 360.

### COMPATIBILITY

Cyclone, JetStream, TruView Cloud	Leica Cyclone 9.2 and newer, BLK360 Data Manager, Leica JetStream 1.3.2 and newer, Leica TruView Cloud 3.0 and newer.
-----------------------------------	---

Leica Cyclone REGISTER 360 is available in a special BLK Edition for users of the Leica BLK360 and Leica BLK2GO.

Copyright Leica Geosystems AG, 9435 Heerbrugg, Switzerland. All rights reserved. Printed in Switzerland – 2017.  
Leica Geosystems AG is part of Hexagon AB. 864328en - 07.20

\* With the appropriate Cyclone PUBLISHER licence. LGS files published from Cyclone REGISTER 360 2020.1 or later with a Cyclone PUBLISHER Pro licence support models in JetStream Viewer.

\*\* With TruView Cloud subscription

**Leica Geosystems AG**  
Heinrich-Wild-Strasse  
9435 Heerbrugg, Switzerland  
+41 71 727 31 31

- when it has to be **right**

**Leica**  
Geosystems