

GeoMax FieldGenius

High Performance Professional Results



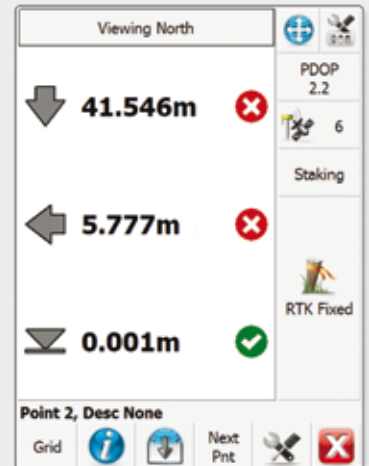
GeoMax
FieldGenius

GeoMax FieldGenius

High Performance Professional Results

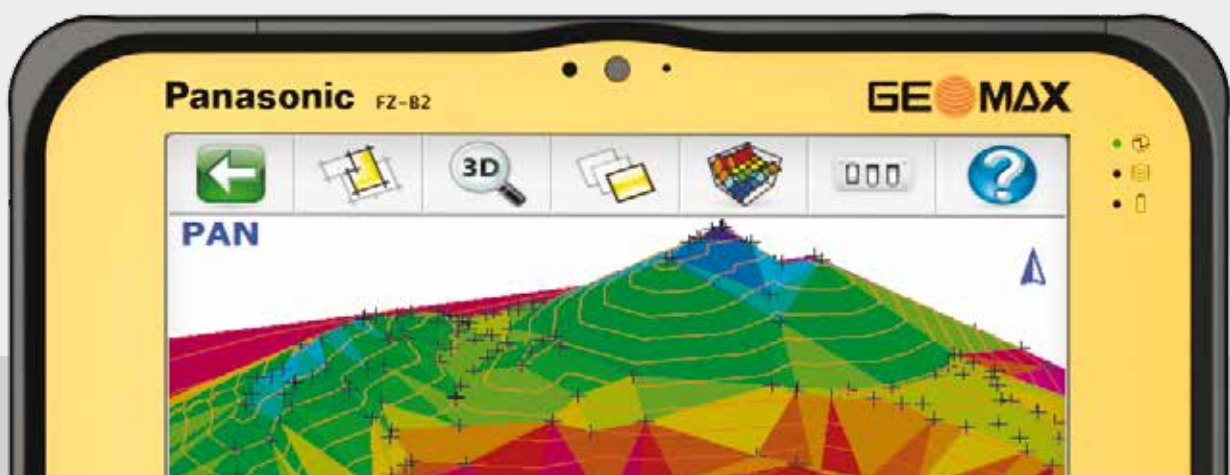
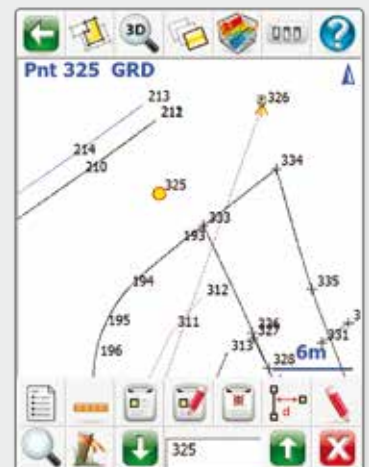
FieldGenius increases efficiency in your daily workflow – it is the choice for organizations that value productivity

- Simple new project workflow helps you start working quickly.
- Workflow is map-driven, not menu-driven, so it is intuitive and simple to learn and to master.
- High visibility staking interface and HD graphics present you with the information you need to get the job done easily. The advanced display with live graphics and intuitive interface uses logical icons, customizable toolbars, smart objects, and easy-to-use GPS and total station controls. Supports standard or high-definition devices!
- Automatic instrument reconnection and Bluetooth device management helps save wasted time. Your time is valuable; on the job every second counts.
- NTRIP caster management allows you to save NTRIP settings for multiple casters. Switch casters without having to re-enter your login information.
- Productivity tasks: Customize your data collector by assigning commands to your keypad keys.
- Calculating tools: Access the built-in RPN calculator from any edit field and easily use surveying calculations.
- Advanced roading, surfacing, slope staking, smart points, DXF & LandXML import/export, and robotic & GPS.

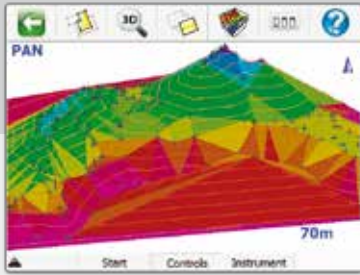


FieldGenius linework is easier than any other data collection software

- Code-free linework: Linework is created automatically without entering codes and is instantly displayed, eliminating the need for a separate sketch. No need to connect the dots back at the office.
- Simple linework tools allow you to edit as you go. Missing lines or segments can be drawn using the pencil tool any time you need to add more info. Made a mistake? A bad line can be removed instantly by tapping it and selecting "Delete Segment".
- FieldGenius is smart enough to know which line to work on.
- Switch lines or line direction as you work – you control the workflow.
- Linework can consist of straight segments, arcs, and splines and ALL linework is 3D
- No limit capability: You can have more than one line with the same description, and you can connect points that have different descriptions. Multiple lines can connect to the same point.



Work More Efficiently in the Field



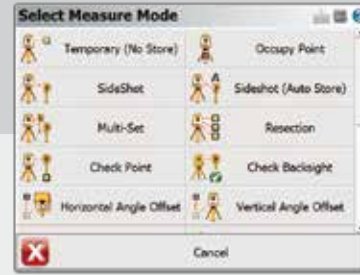
Digital Terrain Modeling, Volumes, and Contouring

FieldGenius has the ability to create & utilize DTM surfaces from existing survey data or create a DTM in real time as the data is collected. The TIN and contours will automatically update with each new shot.



Powerful Roding

FieldGenius roding allows you to manually input or import your alignment data, including centerline, vertical, and template data. Stake your points along your alignment with confidence.



Instrument Control at your Fingertips

Total station and GPS functions are available on a common and easy-to-use instrument toolbar. Access measure modes with the click of a button.

Own the Workflow

Painless data transfer: Seamlessly connect your PC with FieldGenius to show you all the products on your device and transfer files easily. Full field-to-finish capability when paired with MicroSurvey CAD or other survey desktop CAD software. The universal RW5 format can easily transfer your raw files into almost any modern surveying software.

A Winning Combination

FieldGenius works flawlessly with GeoMax total stations and GNSS receivers, and makes great use of high-definition displays on Getac data collectors with its high-resolution interface and large/clear icons.



VERSATILITY

Total Station

Full support of total stations.



GNSS/GPS

Support for RTK GPS receivers.



Advanced

Roding, surfacing, slope staking functions.



Robotic

Functionality for robotic total stations.



GeoMax FieldGenius

High Performance Professional Results

FieldGenius Feature List

The chart below shows the breakdown of functionality included in FieldGenius. These features are split up into five groups:

FieldGenius Core Functionality

- Modern interface with smart menus, smart objects, and incredible graphics
- The drawing is primary to the interface
- Real-time drawing generation with automatic linework
- Built in COGO – intersections, inversing, and traversing
- Enter, edit, and stake points
- One-button project manager
- DXF import for background project view
- DXF coordination of lines, arcs, polylines, points
- FBK export for easy Autodesk LDD
- Import of raw data, points, and linework
- ASCII import/export
- Automatic traversing (1 set, 2 set, n sets)
- Traverse closure calculations, angular adjustment, and compass balance
- Traverse re-coordination in the collector
- Raw data editing
- Easy file transfer to desktop systems
- 3D data view with dynamic zoom, pan, and scroll
- Support for built-in GPS on PS336

GNSS/GPS Features

- Full RTK GPS support
- Profiles for multiple receivers – makes setup easy
- Automatic geodetic transformations from WGS84 to local coordinate systems
- Dynamic GPS toolbar – HDOP, VDOP, PDOP and satellites
- Heads-up display shows lat/long or grid coordinates
- Local transformation (Helmert)
- Horizontal/vertical adjustment
- Statistical analysis with residuals and RMS
- Works with GeoMax RTK GPS receivers

Total Station Features

- Seamless instrument connection and reconnection
- Set instrument EDM measurement modes, min/max distance, prism offsets and target height, curvature and refraction, and more
- Control distance mode, measurement parameters, and backsight reading on some models

Advanced/Roading Features

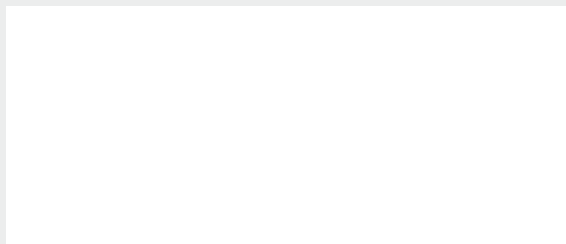
- LandXML project explorer
- LandXML alignment, cross section, and zone staking
- Surface modeling, contouring in real time
- Fixed area and volume calculations
- Stake to DTM
- GIS attribute collection
- 3D alignment, cross section, and template view
- Shaded, rendered view of surface data

Robotics Features

- Automatic "Turn to Point"
- Navigate to stake point
- Advanced robotic control tools
- Wireless radio and Bluetooth support
- Automatic prism tracking
- Assign robotic functions to keypad keys
- Real-time tracking icon in map view
- Support for GeoMax robotic total stations

Free Trial Version

Try a free demo version of FieldGenius and find out for yourself why FieldGenius is the most powerful survey data collection software in the world.



Copyright GeoMax AG